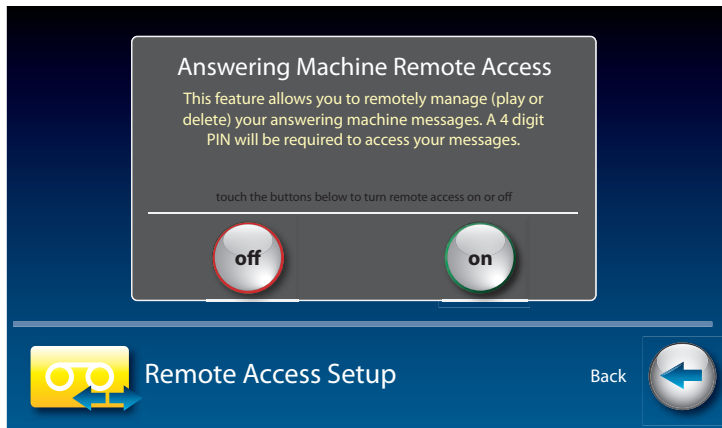


CapTel 2400i: Remote Message Retrieval








CapTel lets you call in to play your Answering Machine messages when you are away from your home or office. This feature must be turned on and you must set a personal identification number (PIN) for security before this feature will work.

The default setting for Remote Access is OFF.

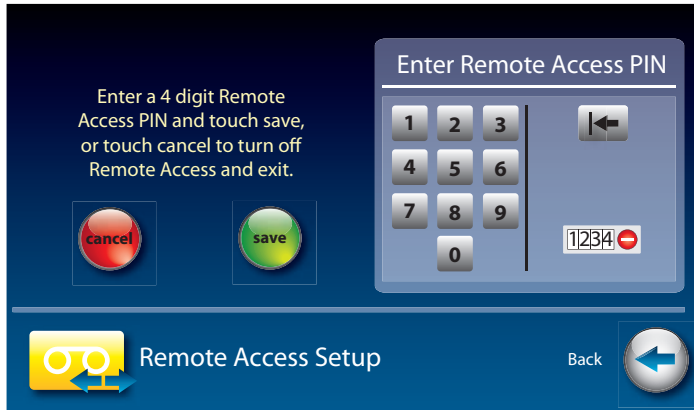
NOTE

If possible, use a different CapTel phone when calling in to retrieve your messages, in order to be able to see captions of the messages. If you call using any other phone, you will be able to listen to the voice part of the Answering Machine messages but you will not be able to read captions at your remote location.

To turn Remote Message Retrieval on:


1. From the display screen, touch  (**Settings**).
2. Touch  (**Answering Machine**).
3. Touch  (**Remote Access off**).
4. Touch  (**On**) or  (**Off**) to select.

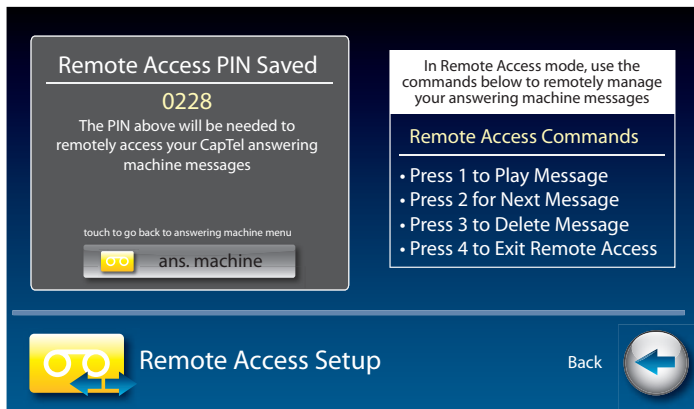
5. CapTel shows the default 4-digit Remote Access PIN. This is the number you need to enter when calling in remotely to play your Answering Machine messages.



You should change the PIN to a different number for your own use. Touch the four digits on the display screen that you want to use. The selected PIN appears on screen to confirm your selection.

TIP Be sure to write your PIN down for your own reference.

6. When you have the PIN that you want, touch  (**save**).
7. CapTel confirms the PIN number you have saved and shows a list of remote access commands. Use these commands when calling in to get your messages remotely.



8. When you are finished, press  (**HOME button**) to exit.

To Access Your Answering Machine Messages Remotely

1. From a different phone, call your own CapTel phone number and let it ring until the Answering Machine greeting begins.
2. Once you hear/read the BEEP, enter your 4-digit PIN by pressing keys on the dial pad of the phone that you are calling from.
3. Your CapTel 2400iBT will start playing aloud any recorded messages (starting with the most recent one) for you to hear. If you are calling from a different CapTel phone, you will be able to see captions of the messages while they are played.

After each message is played, there is a pause that lets you enter one of the following commands on the phone's dial pad:

Press 1 – Play Message
Press 2 – Go to Next Message
Press 3 – Delete Message
Press 4 – Exit Remote Access

If you do not press any of the dial pad keys, after 30 seconds your CapTel 2400iBT will automatically hang up.

4. When you are done, hang up the phone you are calling from.

TIP

If possible, use a different CapTel phone when calling in to retrieve your messages, in order to be able to see captions of the messages. If you call using any other phone, you will be able to listen to the voice part of the Answering Machine message but you will not be able to read captions at your remote location.