

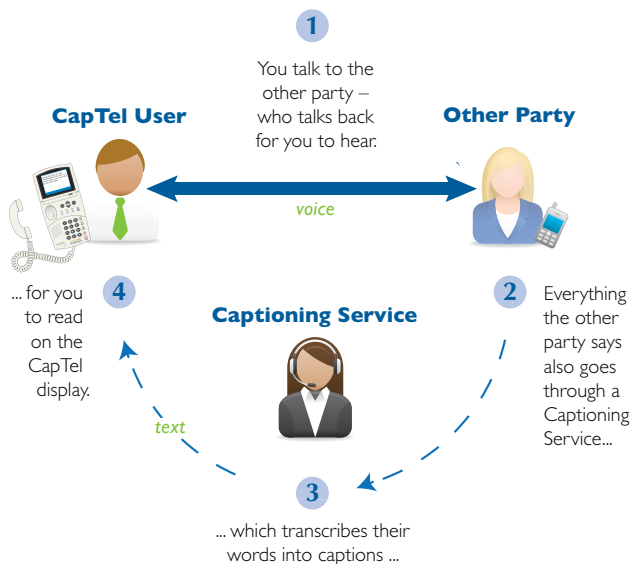
**CapTel**<sup>®</sup>  
Captioned Telephone

The telephone  
that shows you  
captions!

## CapTel<sup>®</sup> Model 800

See everything that your caller says!  
Be sure of what people say over the phone with the new *CapTel* 800. This remarkable phone works like any traditional telephone, but it also shows you written captions during your telephone conversations. Can't quite hear what they say? Just check the captions!





## Benefits

- Large, easy-to-read captions window with adjustable font sizes and colors.
- Display screen tilts for comfortable reading or lies flat to mount the phone on a wall.
- Adjustable volume control (up to 40dB gain) for captioned calls. Volume button is easy to see and adjust during a call.
- One-touch access to *CapTel* Customer Service (speed dial button automatically connects you to *CapTel* help line – available during standard business hours).
- Easy-to-follow menu system with Yes/No questions.
- Phone Book allows you to easily store and dial more than 95 names/phone numbers.
- Speed dial keys for one-touch dialing of frequently called numbers.
- Caller-ID capable – shows you who is calling directly on display screen.

## With *CapTel* Model 800

### Captions are provided by a free service that connects to the call.

- Calls you make are automatically connected to the Captioning Service to provide captions.
- People who call you dial the service first, then enter your phone number in order for you to get captions.\*
- Works just like a standard phone for people who do not need captions.
- Compatible with most headsets and assistive listening devices.
- Easy access to your voice mail and answering machine messages.

### Requirements:

- Analog telephone line(s). If you have DSL service, DSL filter is needed. Not compatible with PBX systems unless analog port available. Not designed for use with digital cable, VOIP or cellular telephone services. *CapTel* 800 can receive calls from cell phone users.\*\*
- Standard electrical power (AC adapter plugs into standard wall outlet).

\*\* People who use digital cable or VOIP telephone service should consider the *CapTel* 800i which supports these telephone services.

## Optional Capabilities

### \* 2-Line Mode Option:

Lets callers dial your telephone number directly instead of calling through the Captioning Service. This optional method of using *CapTel* requires a second telephone line (Line 2 must be analog or DSL with filter).

The *CapTel* 800 is currently available in states that offer *CapTel* service as part of their relay service. For more *CapTel* options visit [www.CapTel.com](http://www.CapTel.com).

Specifications subject to change.

*CapTel* is the latest innovation from

**Ultratec**

CapTel is a registered trademark of Ultratec, Inc.

1-800-233-9130 (Voice/ TTY)

926 Colorado Ave. – Santa Monica, CA 90401

[www.weitbrecht.com](http://www.weitbrecht.com) • [CapTel@weitbrecht.com](mailto:CapTel@weitbrecht.com) (Email)

(310) 656-4924 (V/TTY) • (310) 450-9918 (Fax)

Distributed by

**WCI**

903-511501 1/11